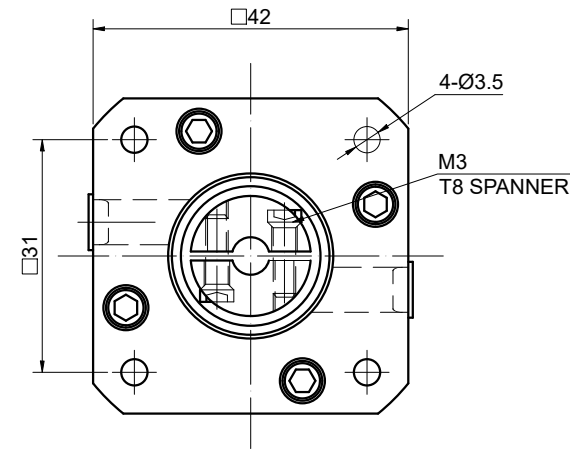
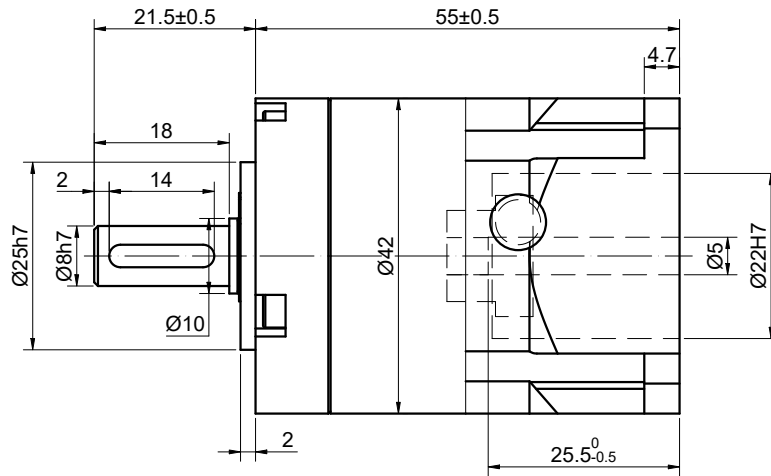
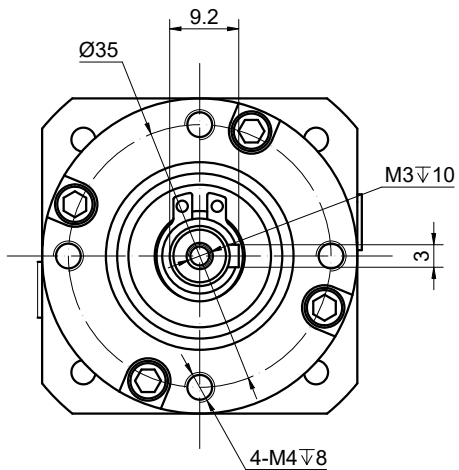


REV.	REVISION RECORD	BY	DATE
0	ORIGIN	LJ	6.9.2025



SPECIFICATION	CONNECTION	VALUE
GEAR RATIO		7
EFFICIENCY		96%
BACKLASH@NO-LOAD(arcmin)		<=15
MAX.PERMISSIBLE TORQUE(Nm)[lb-in]		5.00[44.25]
MOMENT PERMISSIBLE TORQUE(Nm)[lb-in]		10.00[88.51]
SHAFT MAXIMUM AXIAL LOAD(N)		100
SHAFT MAXIMUM RADIAL LOAD(N)		300
GEARBOX MATCHING MOTOR'S INPUT SHAFT LENGTH (mm)		21.5-25
RATED INPUT SPEED(RPM)		3000
MAX. INPUT SPEED(RPM)		6000
NOISE(dB)		<=65
WATERPROOF RATING		IP54
LIFE(h)		20000
WORKING TEMPERATURE		-20°C~150°C[-4°F~302°F]

DIMENSIONS ARE IN MILLIMETERS.
TOLERANCES AS BELOW:
DECIMALS ANGLES
X ±0.5 ±2°
X.X ±0.25
X.XX ±0.13

THIRD ANGLE PROJECTION		
SIGNATURE		DATE
DRN	LJ	6.9.2025
APVD	YSX	6.9.2025

STEPPERONLINE®

PLANETARY GEARBOX

EG17-G7

REV.	0	SCALE	2:3	DWG NO.	A4629
------	---	-------	-----	---------	-------